

# Hampshire Water Transfer and Water Recycling Project

## Environmental Statement – Figure 8.20 Static detector survey locations

**VOLUME NUMBER: 6**

**PLANNING INSPECTORATE SCHEME NUMBER: WA010002**

**APPLICATION DOCUMENT REFERENCE: 6.3**

**APFP REGULATION: 5(2)(a)**

May 2026

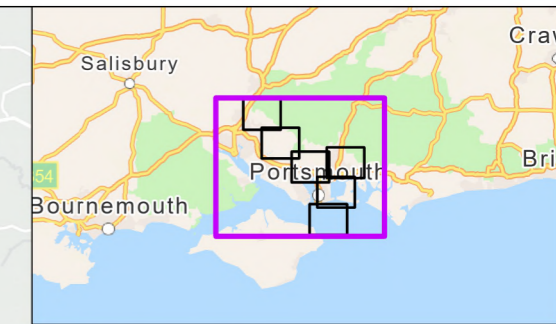
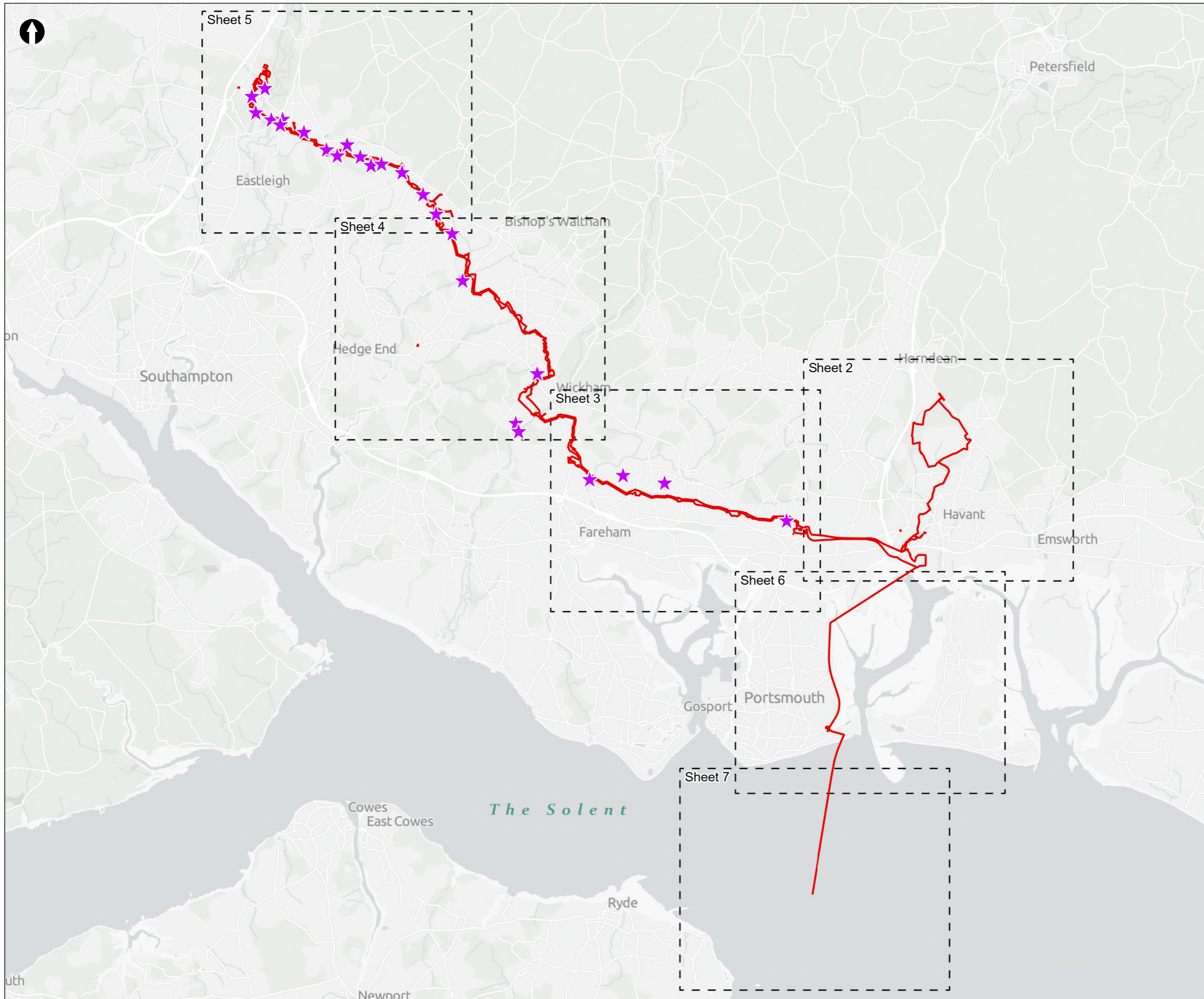
Version 0



from  
**Southern  
Water.** 

The Southern Water logo graphic consists of three stylized, wavy blue lines of varying lengths, positioned to the right of the text 'Southern Water'.





Order Limits  
 Sheet Extent Boxes 1:30K  
★ Static Detector Survey Locations

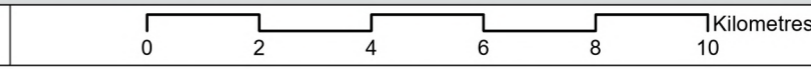
Coordinate system: British National Grid; Datum: OSGB 1936  
 Data sources: © Crown copyright and database rights 2026 Ordnance Survey 0100031673. Sources: Esri, TomTom, Garmin, FAO, NOAA, USGS, © OpenStreetMap contributors, and the GIS User Community, Contains OS data © Crown Copyright and database right 2026. Contains data from OS Zoomstack

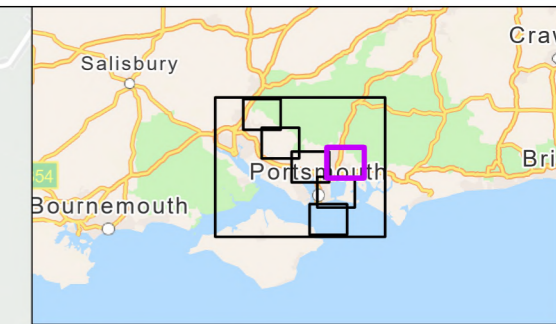
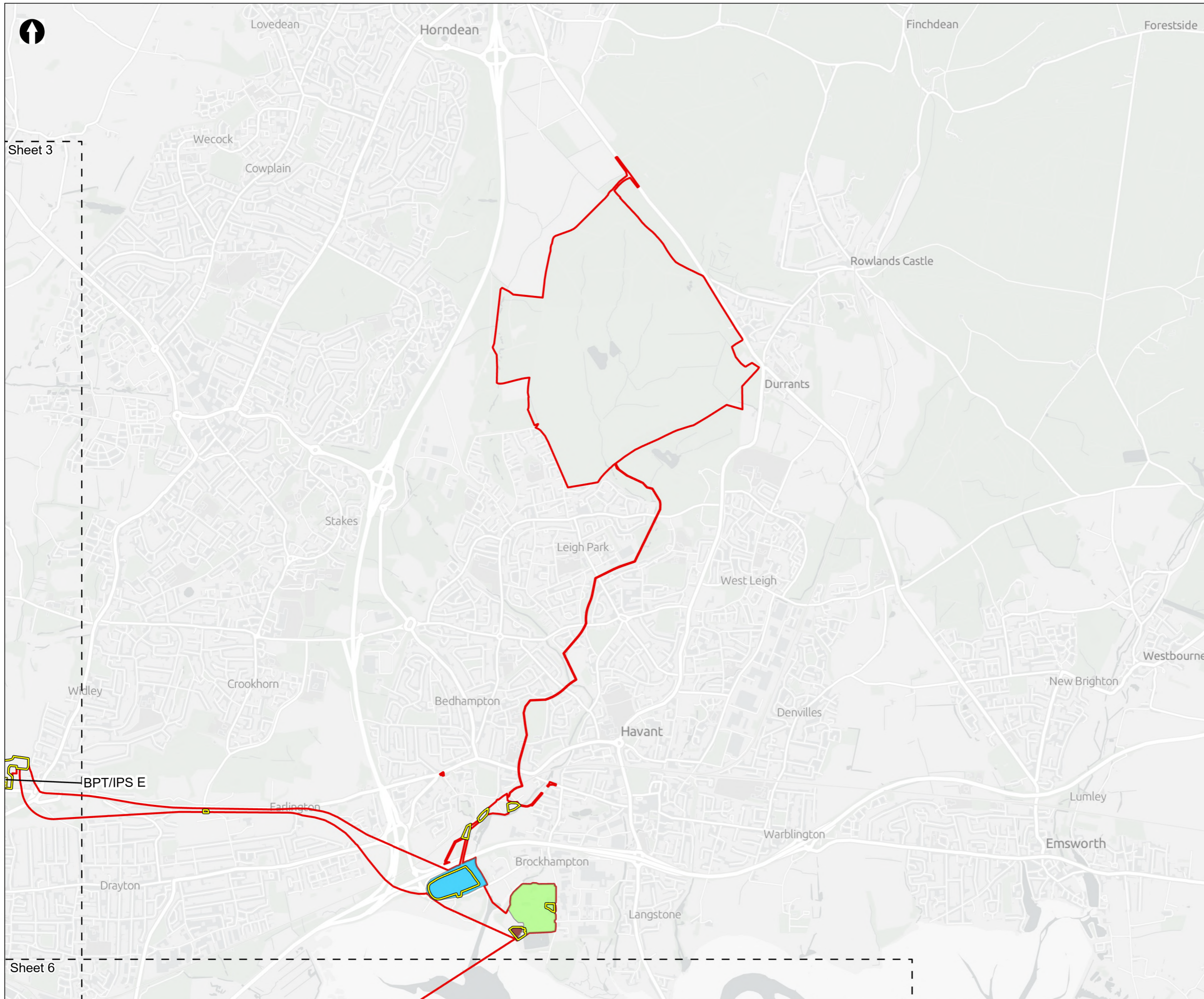
PROJECT TITLE  
 Hampshire Water Transfer and Water Recycling Project



Figure 8.20  
 Static detector survey locations  
 Sheet 1 of 7

Drawn <b>MW</b>	GIS Checked <b>DL</b>	Checked <b>MP</b>	Approved <b>AK</b>
Scale at A3 <b>1:135,000</b>	Status <b>Final</b>	Revision <b>05</b>	Security <b>STD</b>





Order Limits  
 Sheet Extent Boxes 1:30K  
 Construction compounds

**Proposed Development components**

- Budds Farm Wastewater Treatment Works
- Limits of Deviation for Budds Farm Pumping Station
- Water Recycling Plant site

**Above Ground Plant**

- Break Pressure Tank & Intermediate Pumping Station

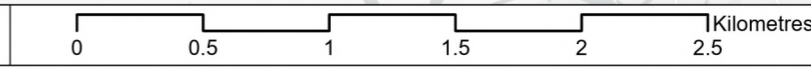
Coordinate system: British National Grid; Datum: OSGB 1936  
 Data sources: © Crown copyright and database rights 2026 Ordnance Survey 0100031673. Sources: Esri, TomTom, Garmin, FAO, NOAA, USGS, © OpenStreetMap contributors, and the GIS User Community, Contains OS data © Crown Copyright and database right 2026. Contains data from OS Zoomstack

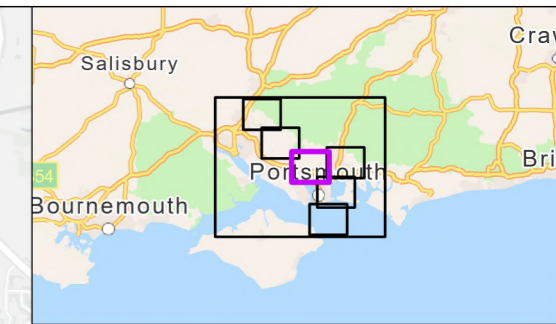
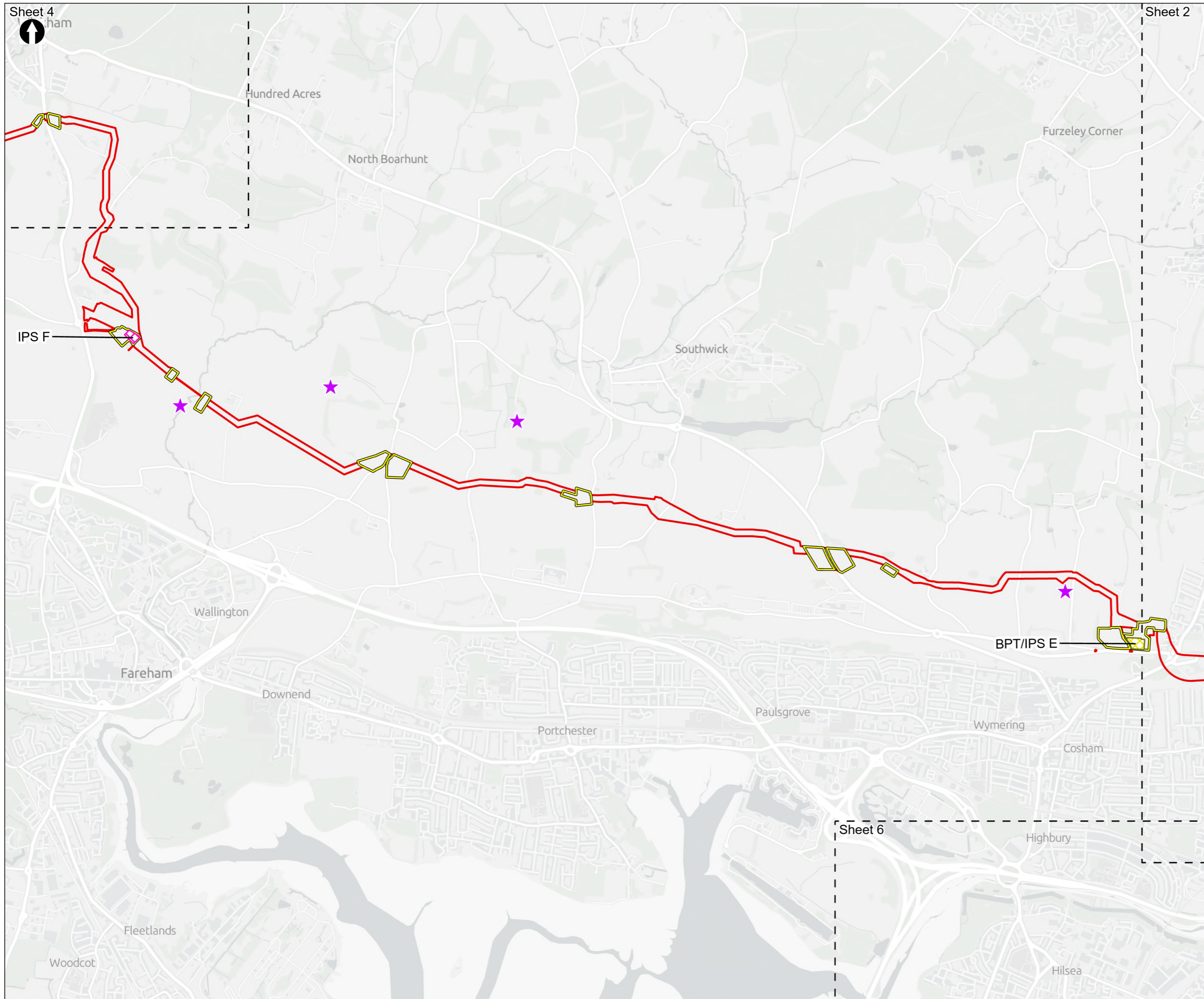
PROJECT TITLE  
 Hampshire Water Transfer and Water Recycling Project



Figure 8.20  
 Static detector survey locations  
 Sheet 2 of 7

Drawn <b>MW</b>	GIS Checked <b>DL</b>	Checked <b>MP</b>	Approved <b>AK</b>
Scale at A3 <b>1:30,000</b>	Status <b>Final</b>	Revision <b>05</b>	Security <b>STD</b>





**Order Limits**

**Sheet Extent Boxes 1:30K**

**Construction compounds**

**Static Detector Survey Locations**

**Above Ground Plant**

- Break Pressure Tank & Intermediate Pumping Station
- Intermediate Pumping Station

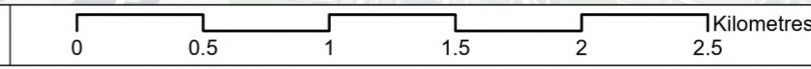
Coordinate system: British National Grid; Datum: OSGB 1936  
 Data sources: © Crown copyright and database rights 2026 Ordnance Survey 0100031673. Sources: Esri, TomTom, Garmin, FAO, NOAA, USGS, © OpenStreetMap contributors, and the GIS User Community, Contains OS data © Crown Copyright and database right 2026. Contains data from OS Zoomstack

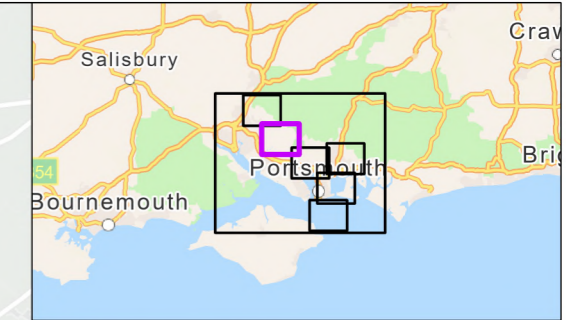
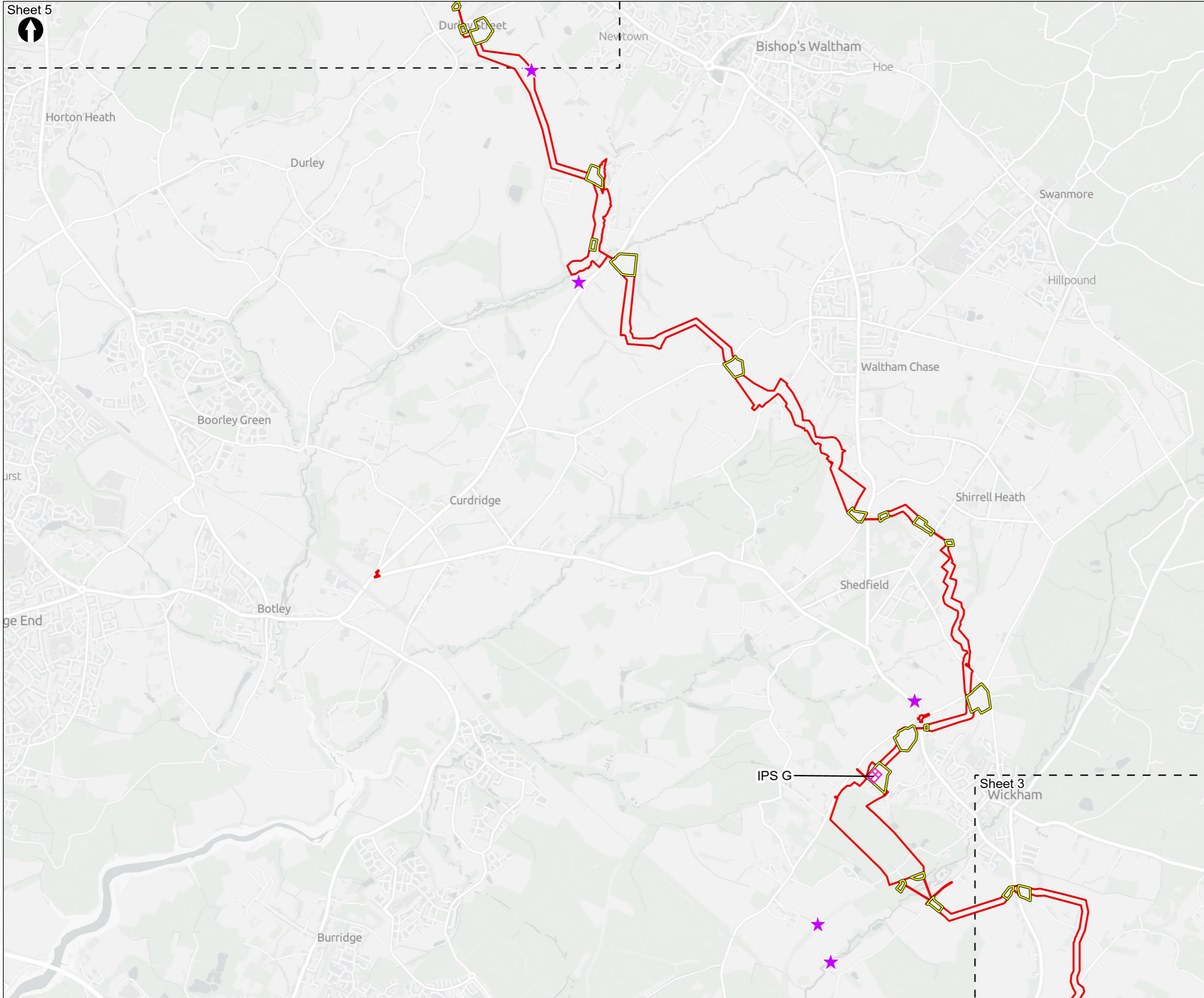
**PROJECT TITLE**  
 Hampshire Water Transfer and Water Recycling Project



**Figure 8.20**  
 Static detector survey locations  
 Sheet 3 of 7

Drawn <b>MW</b>	GIS Checked <b>DL</b>	Checked <b>MP</b>	Approved <b>AK</b>
Scale at A3 <b>1:30,000</b>	Status <b>Final</b>	Revision <b>05</b>	Security <b>STD</b>





**Order Limits**  
 Order Limits

**Sheet Extent Boxes 1:30K**  
 Sheet Extent Boxes 1:30K

**Construction compounds**  
 Construction compounds

**Static Detector Survey Locations**  
 Static Detector Survey Locations

**Above Ground Plant**  
 Intermediate Pumping Station

Coordinate system: British National Grid; Datum: OSGB 1936  
 Data sources: © Crown copyright and database rights 2026 Ordnance Survey 0100031673. Sources: Esri, TomTom, Garmin, FAO, NOAA, USGS, © OpenStreetMap contributors, and the GIS User Community, Contains OS data © Crown Copyright and database right 2026. Contains data from OS Zoomstack

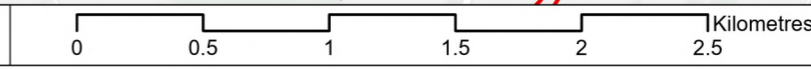
PROJECT TITLE  
 Hampshire Water Transfer and Water Recycling Project

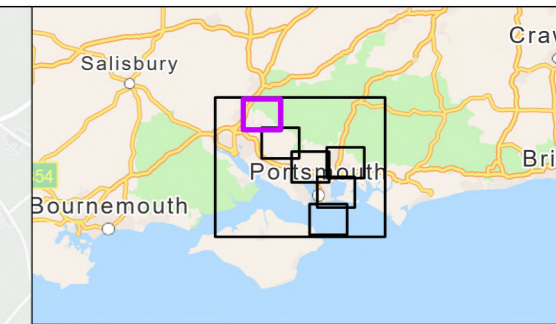
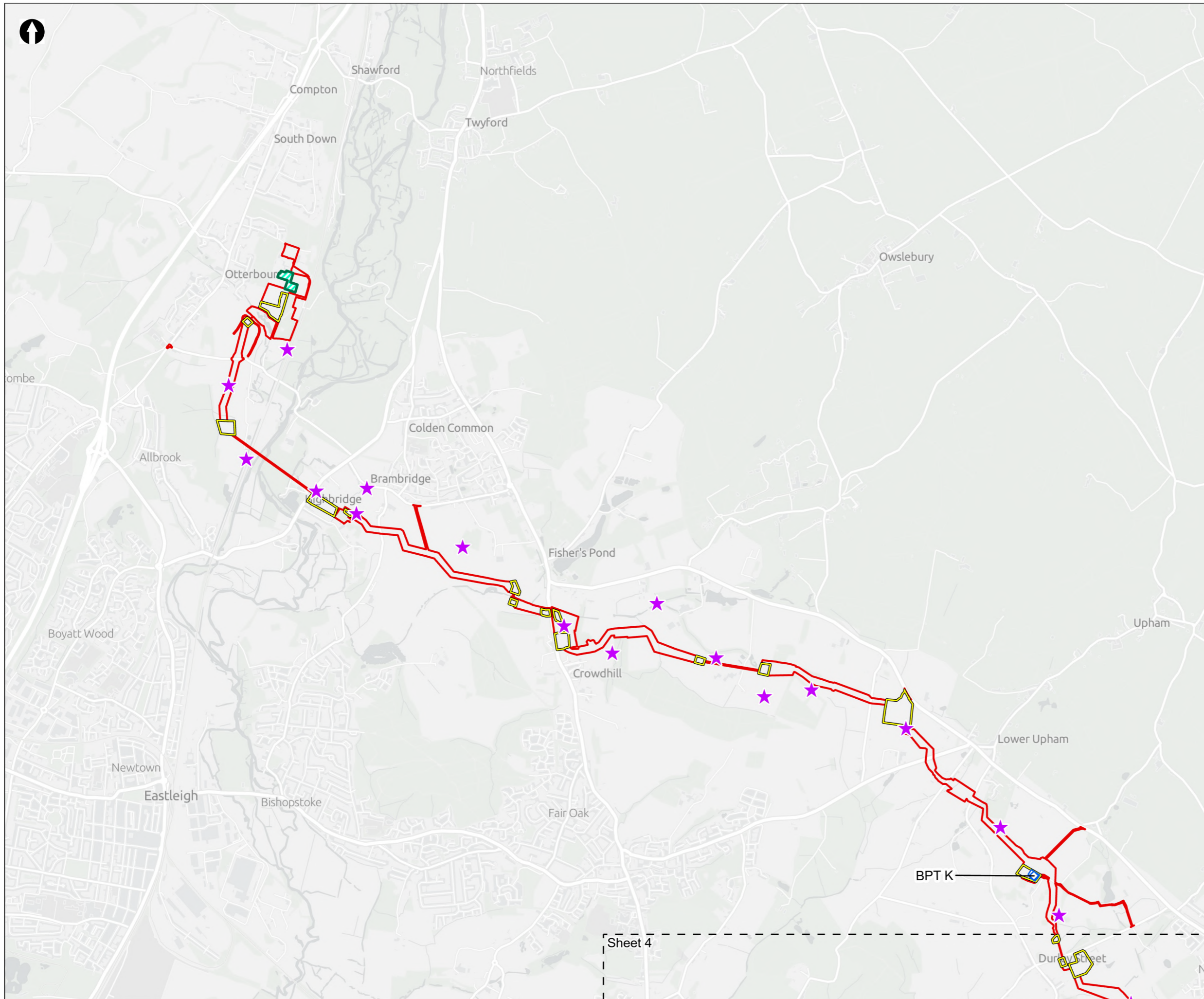


Figure 8.20  
 Static detector survey locations  
 Sheet 4 of 7

Drawn <b>MW</b>	GIS Checked <b>DL</b>	Checked <b>MP</b>	Approved <b>AK</b>
Scale at A3 <b>1:30,000</b>	Status <b>Final</b>	Revision <b>05</b>	Security <b>STD</b>

Drawing Number  
**PC5223-RHD-ES-ZZ-D-Z-0045**





- Order Limits
- Sheet Extent Boxes 1:30K
- Construction compounds
- Limits of Deviation for Otterbourne INNS Treatment Plant
- ★ Static Detector Survey Locations
- Above Ground Plant**
- Break Pressure Tank

Coordinate system: British National Grid; Datum: OSGB 1936  
 Data sources: © Crown copyright and database rights 2026 Ordnance Survey 0100031673. Sources: Esri, TomTom, Garmin, FAO, NOAA, USGS, © OpenStreetMap contributors, and the GIS User Community, Contains OS data © Crown Copyright and database right 2026. Contains data from OS Zoomstack

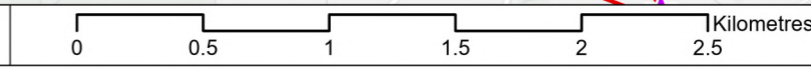
PROJECT TITLE  
 Hampshire Water Transfer and Water Recycling Project

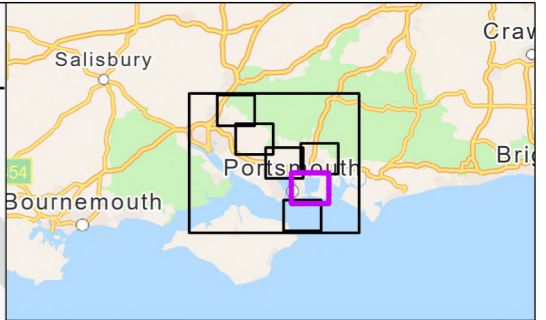
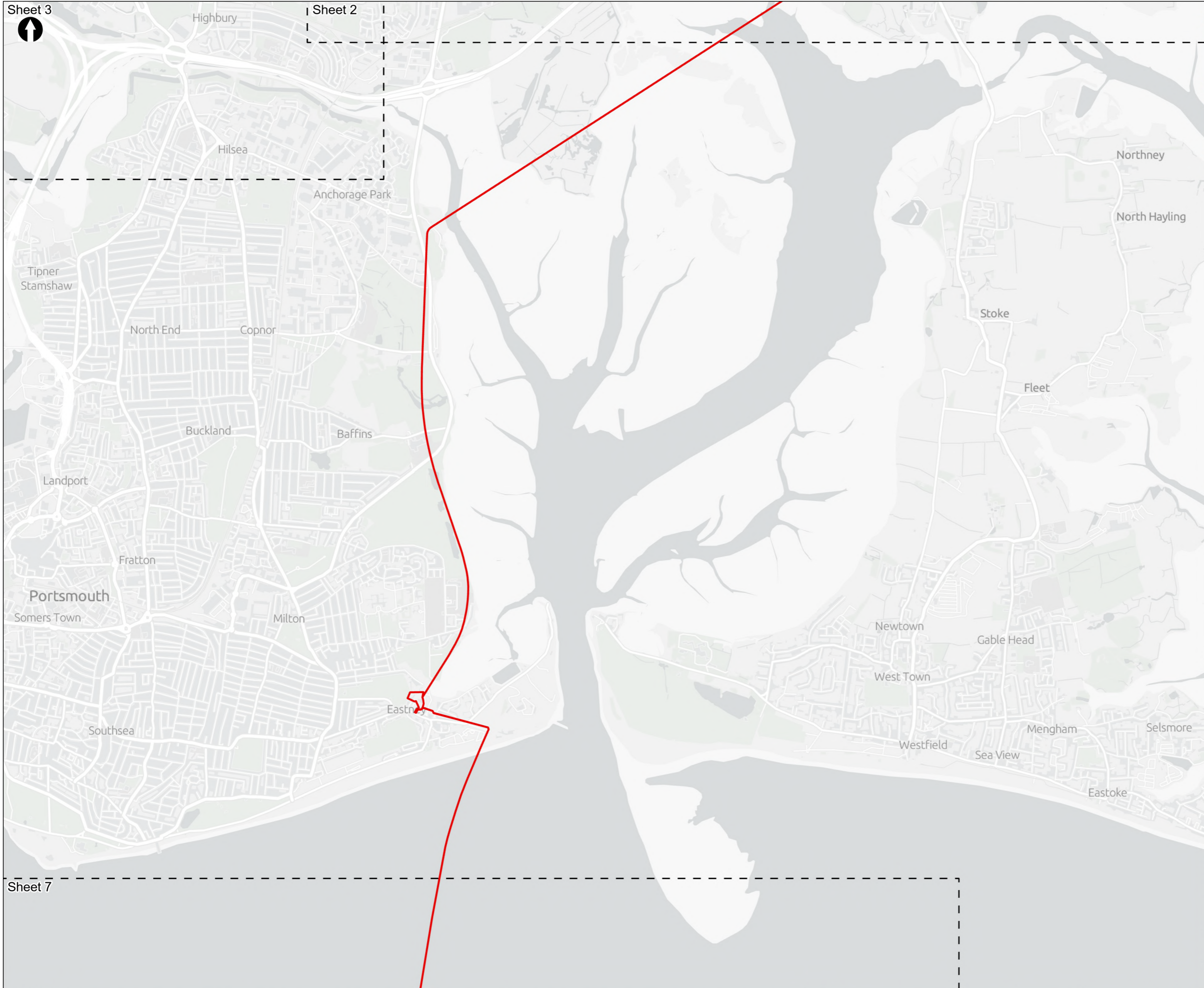


Figure 8.20  
 Static detector survey locations  
 Sheet 5 of 7

Drawn <b>MW</b>	GIS Checked <b>DL</b>	Checked <b>MP</b>	Approved <b>AK</b>
Scale at A3 <b>1:30,000</b>	Status <b>Final</b>	Revision <b>05</b>	Security <b>STD</b>

Drawing Number  
**PC5223-RHD-ES-ZZ-D-Z-0045**





Order Limits  
 Sheet Extent Boxes 1:30K

Coordinate system: British National Grid; Datum: OSGB 1936  
 Data sources: © Crown copyright and database rights 2026 Ordnance Survey 0100031673. Sources: Esri, TomTom, Garmin, FAO, NOAA, USGS, © OpenStreetMap contributors, and the GIS User Community, Contains OS data © Crown Copyright and database right 2026. Contains data from OS Zoomstack

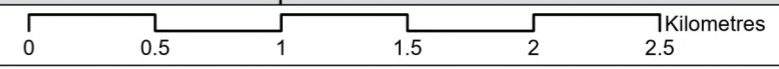
PROJECT TITLE  
 Hampshire Water Transfer and Water Recycling Project



Figure 8.20  
 Static detector survey locations  
 Sheet 6 of 7

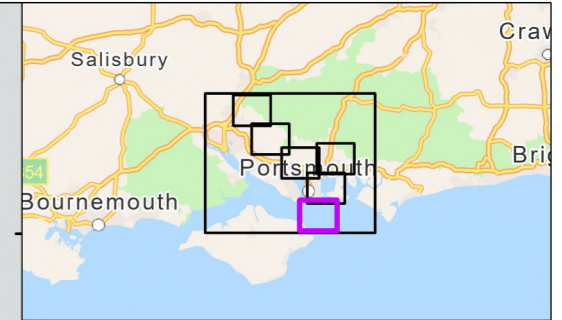
Drawn <b>MW</b>	GIS Checked <b>DL</b>	Checked <b>MP</b>	Approved <b>AK</b>
Scale at A3 <b>1:30,000</b>	Status <b>Final</b>	Revision <b>05</b>	Security <b>STD</b>

Drawing Number  
**PC5223-RHD-ES-ZZ-D-Z-0045**





Sheet 6



Order Limits  
 Sheet Extent Boxes 1:30K

Coordinate system: British National Grid; Datum: OSGB 1936  
Data sources: © Crown copyright and database rights 2026 Ordnance Survey 0100031673. Sources: Esri, TomTom, Garmin, FAO, NOAA, USGS, © OpenStreetMap contributors, and the GIS User Community, Contains OS data © Crown Copyright and database right 2026. Contains data from OS Zoomstack

PROJECT TITLE  
Hampshire Water Transfer and Water Recycling Project



Figure 8.20  
Static detector survey locations  
Sheet 7 of 7

Drawn <b>MW</b>	GIS Checked <b>DL</b>	Checked <b>MP</b>	Approved <b>AK</b>
Scale at A3 <b>1:30,000</b>	Status <b>Final</b>	Revision <b>05</b>	Security <b>STD</b>

Drawing Number  
**PC5223-RHD-ES-ZZ-D-Z-0045**

